

# INSTALLATION INSTRUCTIONS

VEHICLE  
DAKOTA PICKUP (ALL MODELS)  
SHORT BED AND LONG BED 2WD, 4WD

## EQUIPMENT REQUIRED:

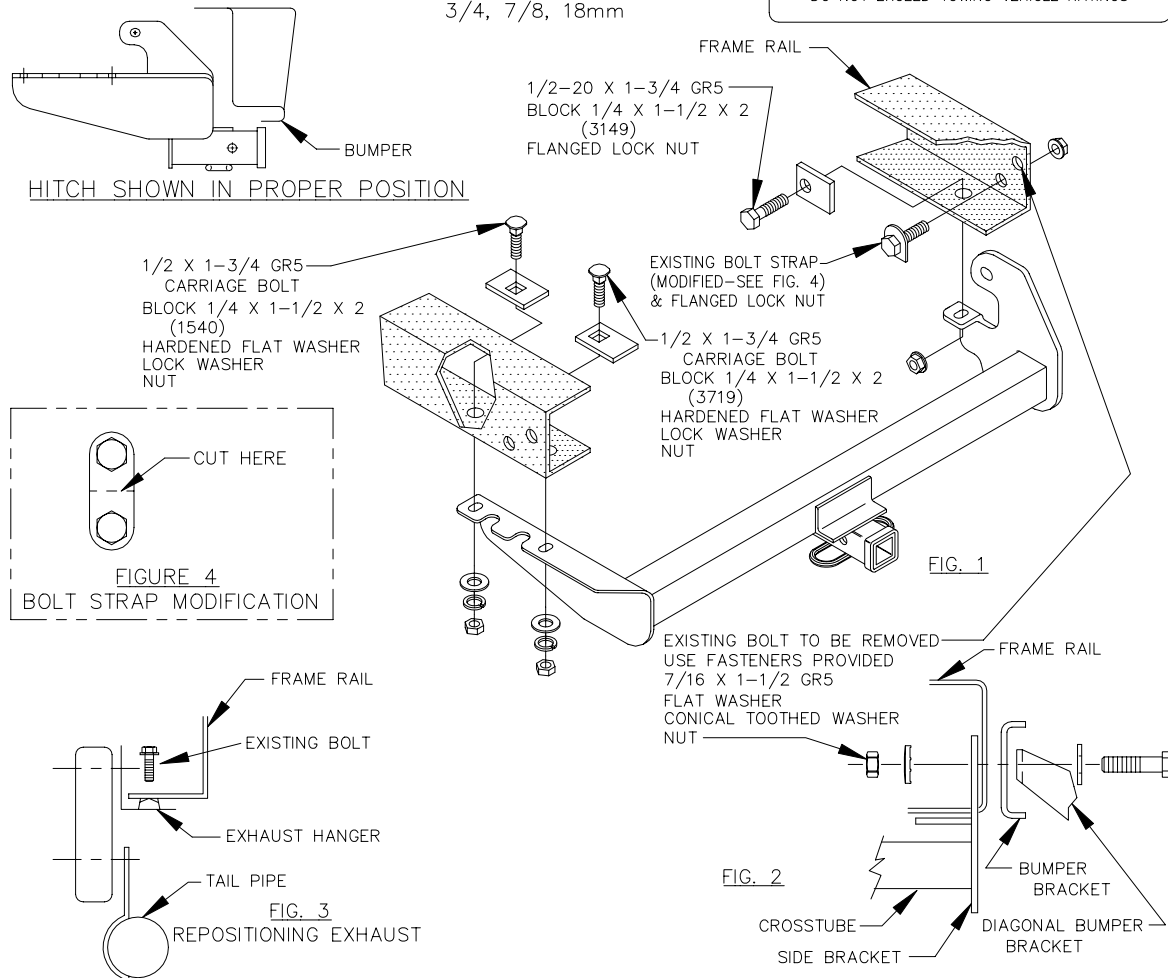
WIRING ACCESS LOCATION: PU3, PU4

DRILL BITS: 1/2"

HITCH REQUIRES 1/2" PIN AND CLIP.

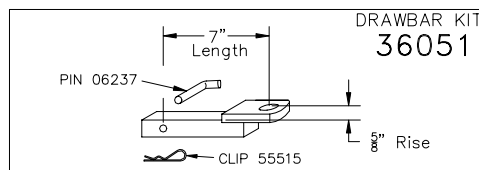
WRENCHES: (TIGHTEN ALL FASTENERS WITH TORQUE WRENCH) 1/2, 5/8, 11/16,  
3/4, 7/8, 18mm

3500 LB MAX GROSS TRAILER WT  
300 LB MAX TONGUE WEIGHT  
DO NOT EXCEED TOWING VEHICLE RATINGS



1. REMOVE REARMOST BOLT AT THE END OF THE FRAME (PASSENGER SIDE).  
**NOTE:** ON SOME MODELS, THE TWO REARMOST ATTACHMENTS HAVE TWO (2) BOLTS CONNECTED WITH A PLATE. THE BOLTS WILL HAVE TO BE SEPARATED (SEE FIG. 4), DISCARDING REARMOST BOLT AND REINSTALLING THE OTHER AS SHOWN.
  2. POSITION HITCH ON VEHICLE AND INSTALL 7/16" FASTENERS AS SHOWN IN FIG.2.
  3. **95 AND EARLIER MODELS**  
USING SIDE BRACKET AS A TEMPLATE, DRILL TWO HOLES (DRIVER'S SIDE), ONE HOLE (PASSENGER SIDE) INTO BOTTOM OF FRAME RAIL, WITH 1/2" DRILL.
  3. **96 MODELS**  
USING SIDE BRACKET AS TEMPLATE, DRILL FORWARD ATTACHMENT HOLE (DRIVER'S SIDE) INTO BOTTOM OF FRAME RAIL, WITH 1/2" DRILL.
  3. **97 MODELS**  
ALIGN HITCH WITH EXISTING HOLES.
  4. INSTALL REMAINING 1/2" FASTENERS AS SHOWN.
- NOTE (96 AND EARLIER MODELS):** IF ADDITIONAL TAIL PIPE CLEARANCE IS REQUIRED, PERFORM THE FOLLOWING STEPS:
5. REMOVE THE BOLT CONNECTING THE EXHAUST HANGER TO THE FRAME.
  6. REPOSITION THE EXHAUST HANGER AND REINSTALL BOLT (REMOVED IN STEP 6) AS SHOWN IN FIG. 3.

TIGHTEN 7/16 GR5 TO 50 LB.-FT  
TIGHTEN 1/2-20 GR5 TO 95 LB.-FT  
TIGHTEN 1/2 GR5 TO 75 LB.-FT



USE ONLY THE DRAWBAR SHOWN FOR CORRECT BUMPER CLEARANCE AND HEIGHT.  
DRAWBAR MUST BE USED IN THE RISE POSITION ONLY.

THIS PRODUCT COMPLIES WITH SAFETY SPECIFICATIONS AND REQUIREMENTS FOR CONNECTING DEVICES AND TOWING SYSTEMS OF THE STATE OF NEW YORK, V.E.S.C. REGULATION V-5 AND SAE J684.

APPROX WEIGHT (LB.)	FASTENER KIT
29	01130-994

**NOTE:** Check hitch frequently, making sure all fasteners and ball are properly tightened. If hitch is removed, plug all holes in trunk pan or other body panels to prevent entry of water and exhaust fumes. A hitch or ball which has been damaged should be removed and replaced. Observe safety precautions when working beneath a vehicle and wear eye protection. Follow car maker's specs for maximum trailer weight and tongue weight. Do not cut access or attachment holes with a torch.

**TOWING PRODUCTS**  
Plymouth, Michigan