



INSTALLATION MANUAL

Complete Parts List

1	Center section
1	Driver / left side extension
1	Passenger / right side extension
1*	Driver / left side bracket
1*	Passenger / right side bracket
4*	Hex bolt, M10 x 35mm
12*	Button head bolt, M10 x 40mm
20*	Flat washer, M10
2*	Flat washer, M10 x 27mm x 3mm
16*	Lock washer, M10
10*	Nut, M10
8*	Hex bolt, M12 x 30mm
4	Hex bolt, M12 x 35mm
4	Flat washer, M12
4	Lock washer, M12
2	C-channel bracket

*Component supplied with Side Extension package.

Tools Required

Ratchet	Level
Socket, 16mm	Socket, 18mm

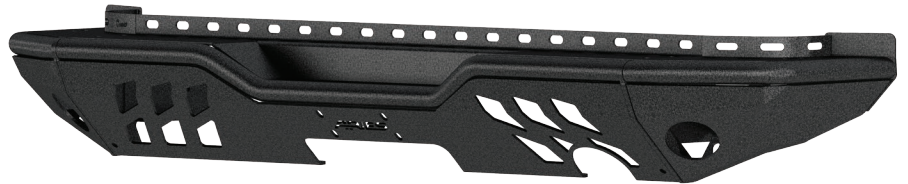
Level of Difficulty

Moderate



Scan for helpful install tips

Product Image



See table below for both available configurations

Rear Modular Bumper Kits

Kit#	Center#	Side#	Material
2082038	2081020	2081220	Steel
2082036	2081021	2081221	Aluminum

All modular bumpers and components are finished with a textured black powder coat

Notes and Maintenance

Before you begin installation, read all instructions thoroughly.

Proper tools will improve the quality of installation and reduce the time required.

For black finishes, mild soap may be used to clean the product.

For black finishes, mild soap may be used to clean the product.

Refer to the table below when securing hardware during the installation process to help prevent damage to the product or vehicle.

Torque Specifications

METRIC		SAE	
M6 bolt	3 ft.-lbs.	1/4" bolt	3 ft.-lbs.
M8 bolt	7 ft.-lbs.	5/16" bolt	7 ft.-lbs.
M10 bolt	16 ft.-lbs.	3/8" bolt	16 ft.-lbs.
M12 bolt	28 ft.-lbs.	7/16" bolt	20 ft.-lbs.
--	--	1/2" bolt	28 ft.-lbs.

Step 1

Starting on the driver side, using a 16mm socket, remove the M10 bolts holding the corners of the factory bumper support bracket to the frame.



Step 2

Remove the center bumper bolts holding the Z-shaped brackets to the frame.

Repeat this step for the passenger side.



Step 3

With the brackets removed, lift the bumper off the frame rails and set it aside.

Using an 18mm socket, remove the bolts holding the stock tow hooks to the frame. These will not be reinstalled.



Step 4

Lay bumper on flat work surface and attach the bumper side extensions. Each attachment point will be fastened with a M10 hex head bolt, a lock washer, two small flat washers and a nut.

Do this for all four mounting locations. Repeat this step for the passenger side.

Snug the hardware, but do not fully tighten.



Step 5

Take C-channel bracket and place into the frame of the Jeep.

Move C-channel with screwdriver as shown to move into place if needed.

Repeat this step for the passenger side.



Step 6

With help, lift the new bumper center section over the frame rails.



Step 7

With bumper in place secure with M12 hex bolts, lock washers and flat washers. Snug with an 18mm socket, but do not fully tighten. Repeat this step for the passenger side.



Step 8

Secure the corner bumper bracket to the vehicle with M10 hex bolts, locking washers and large flat washers.

Secure the corner bumper bracket to the bumper with M10 button head bolts, locking washers, small and large flat washers, and nut

Repeat this step for the passenger side



Step 8

Check to make sure the bumper is level. Adjust if necessary and fully tighten all hardware.

Periodically inspect all hardware to make sure it is secure and tight. To protect your investment, we recommend applying a layer of non-abrasive wax.

Congratulations on the installation of your new ARIES rear modular bumper.

